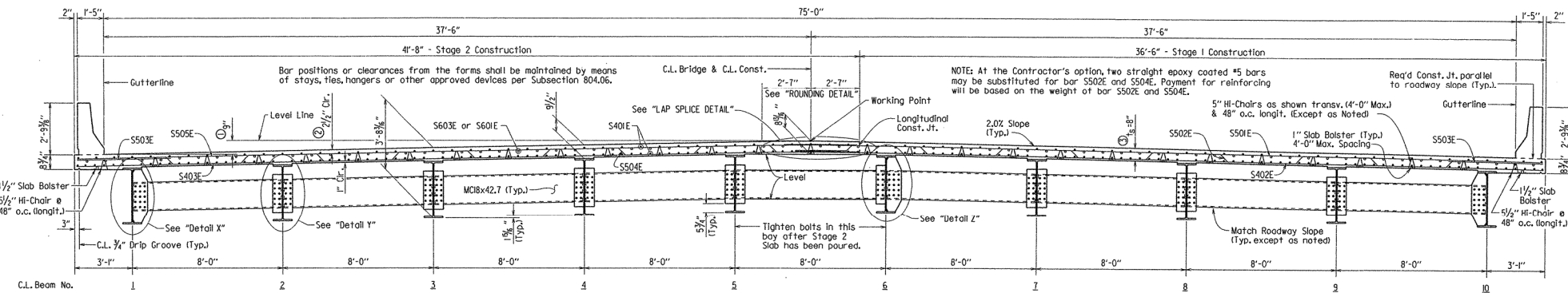


Slab Reinforcing:
 Longitudinal: S401E as shown
 S601E as shown over int. supports, see "Reinforcing Plan", Dwg. No. 55882.
 S603E at Bridge Ends
 Transverse: S502E & S504E @ 12" o.c. bent up over beams
 S501E & S505E @ 12" o.c. in top, S402E & S403E @ 12" o.c. in bottom — Alternate
 S503E @ 6" in top of overhangs bundled with top transverse bars

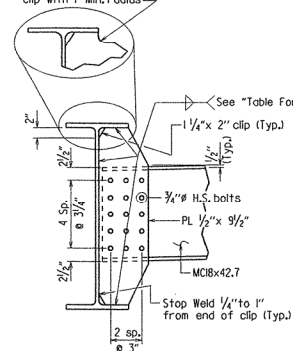
- Working point to gutter line.
- Tolerance: Minus = $\frac{1}{4}"$
 Plus = The amount of slab thickening used to meet slab thickness tolerance - see "ADJUSTMENT FOR SLAB THICKNESS TOLERANCE".
- See "ADJUSTMENT FOR SLAB THICKNESS TOLERANCE".

DATE REVISED	DATE FILMED	DATE REVISED	DATE FILMED	FED. ROAD DIST. NO.	STATE	FED. AID PROJ. NO.	SHEET NO.	TOTAL SHEETS
				6	ARK.			
				JOB NO.		110217	140	348
						07320 - SPAN DETAILS -		55879

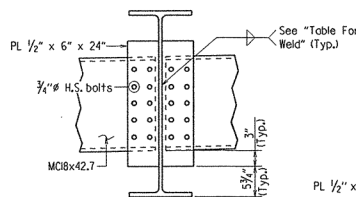


④ Clip with 1" Min. radius

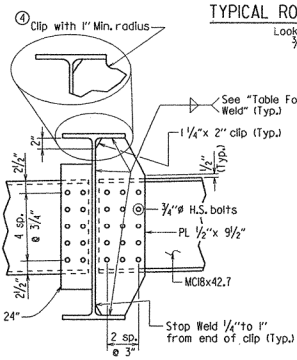
④ If permanent steel bridge deck forms are used, the fabricator shall clip plates as necessary to accommodate the deck form supports.



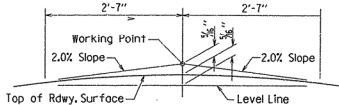
DETAIL X
 1" = 1'-0"



DETAIL Y
 1" = 1'-0"

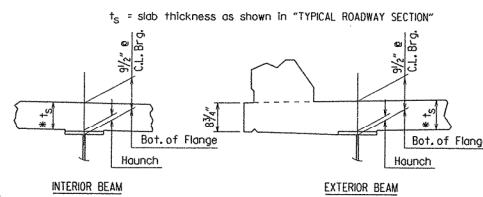


DETAIL Z
 1" = 1'-0"



NOTES: Working Point matches Theoretical Roadway Grade.

ROUNDING DETAIL
 No Scale



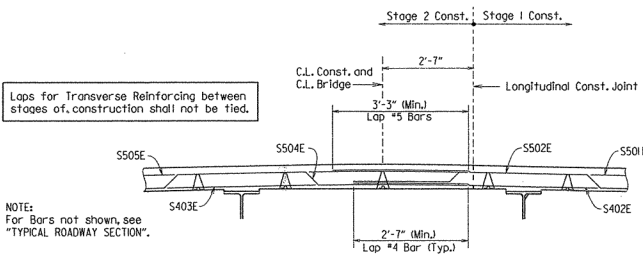
*Tolerance when removable deck forming is used is + $\frac{1}{2}"$, - $\frac{1}{4}"$. Haunch forming is required and shall be adjusted to maintain slab thickness tolerance.

ADJUSTMENT FOR SLAB THICKNESS TOLERANCE
 No Scale

TABLE FOR WELD

Material Thickness of Thicker Part Joined (Inches)	Minimum Size of Fillet Weld (Inches)	Single Pass Weld Must Be Used
To $\frac{3}{4}"$ inclusive	$\frac{1}{4}"$	
Over $\frac{3}{4}"$	$\frac{3}{8}"$	

NOTE: When a fillet weld size, as shown on the plans, is larger than the minimum, the first pass shall be that specified for minimum size of fillet weld.



LAP SPlice DETAIL
 No Scale



SHEET 1 OF 8
 DETAILS OF 194'-0" INTEGRAL
 CONT. COMP. W-BEAM UNIT
 BIG CYPRESS CREEK
 ROUTE SEC.
 ARKANSAS STATE HIGHWAY COMMISSION
 LITTLE ROCK, ARK.
 DRAWN BY: MRE DATE: 01/23/13 FILENAME: B10217x2.sldgen
 CHECKED BY: TFC DATE: 01/18/14 SCALE: $\frac{3}{8}" = 1'-0"$
 DESIGNED BY: LJR DATE: 12/1/12 OF AS SHOWN
 BRIDGE NO. 07320 DRAWING NO. 55879

MAINTENANCE OF TRAFFIC: See Roadway Plans.

LAYOUT OF BRIDGE OVER
BIG CYPRESS CREEK
WALNUT CORNER - CYPRESS CORNER (S)
LEE COUNTY
ROUTE 1 SEC. 9
ARKANSAS STATE HIGHWAY COMMISSION
LITTLE ROCK, ARK.
BRIDGE NO. 07320 DRAWING NO. 55873
DESIGNED BY: LJB DATE: 10/12/12
CHECKED BY: TFC DATE: 8/18/18
SCALE: 1"=20'-0"